



## STANDARD OPERATING PROCEDURE FOR GREEN POWER CHARGER (GP-MXV)

### SAFETY NOTES

---

- ❖ It is advisable that an appropriate area be selected and designated for charging.
- ❖ A wash station should be supplied at all charging stations as there is always a risk of acid splashes.
- ❖ Select a well ventilated area for charging. Ensure that the charging area is clean and tidy.
- ❖ There is a possibility of the terminals being short circuited.
- ❖ Remove filler caps and top up with distilled water if required.
- ❖ Replace filler caps loosely.
- ❖ Clean battery terminals.
- ❖ Ensure correct voltage is selected.
- ❖ Switch off the charger before disconnecting/connecting battery.
- ❖ Do not connect reverse polarity to the battery.

### OPERATING PROCEDURE

---

**Step 1:** - Connect input AC power of the charger to input supply at the workshop.

**Step 2:** - Connect the Red cable to positive and Black cable to negative terminals of the charger.

**Step 3:** - Connect the Red clamp to the positive terminal and Black clamp to the negative terminals of the battery.

**Step 4:** - Switch **ON** the power button from back side of the charger,

**Step 5:** - Switch **ON** the power button at the front of the module.

**Step 6:** - Press Initial/ Normal {I/N} button for 2 secs to select the charging model for the charger.

**Note:** **Initial mode:** Used for the freshly manufactured battery, charging for the first time.  
**Normal Mode:** Used for the Service battery.

**Step 7:** - Press {2/4} button select the charging currents for the battery depending on the capacity of the battery.

**Step 8:** -The display will show the charging mode and process of charging.



**Step 9:** - Switch off the charger when **Charge Finish** is displayed on the screen.

**Note:** -

- Whenever a new battery is connected, please reset the system, to reset press any button in front of the charger.
- To check if the system is reset, see the charging timer in the display, it will start 00:00:01

### *Symptoms & Precautions*

---

**Charger not starting:** -

- Check the fuse at the back side of the charger. Use same rating (10A, 250V)
- Check input supply.( >120V)
- Check if the proper Earthing is available.

**“Check Connection Polarity”**

- Check if the correct polarity is connected (Red cable to +ve & Black cable to -ve)
- Check if the battery is damaged/shorted.
- Check if the parameters are set correctly as per the connection.

**Note:** - Please select the AMP (Current) setting for the particular battery depending on the capacity of batteries recommended by manufacturers.

The charger has the following current setting available for the batteries.

- 2 Amps: - 5 Ah and below
- 4 Amps: - 6 Ah and above.



## TROUBLESHOOTING PROCEDURE:

1. **The Charger is not getting “ON”.**
  - a. Check replacing the Power Chord.
  - b. Check the Fuse at the Backside of the panel. (If Fuse blown, replace it with 10 Amps Fuse : 2 nos.).Slide the fuse holder to replace the fuse.



- c. If problem Exists call for Service.
2. **The particular is not getting on/ not functioning.(Call for Service)**
3. **To remove the module from the charger :**

### Step 1:



“Remove Four No.s of Screws of the module”

### Step 2:



“Slide the module outwards firmly”

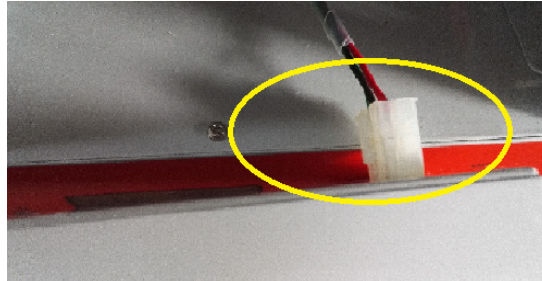


**APPLE ENERGY PVT. LTD.**

**MIDTRONICS**

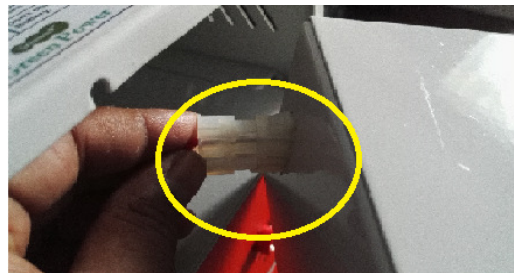


**Step 3:**



**“Detach the Individual Module Power-Chord from the Back side of the module “**

**Step 4:**



**“Detach the clip to free the module and send the module to service centre “**

*For Service Complaints: -*

**Apple Energy Pvt. Ltd.**

G-15/406, Hilton Centre, Sector-11,  
CBD Belapur, Navi Mumbai-400614, India.

Tel.:91-22-27564033/32/103.

E-mail: [greenpower@appleenergy.in](mailto:greenpower@appleenergy.in)

[www.appleenergy.in](http://www.appleenergy.in)



**APPLE ENERGY PVT. LTD.**

